

This drawing is for Planning purposes only.
All dimensions to be checked on site.

Notes

0 25mm 50mm
Scale Bar 1:1

0 50mm 100mm
Scale Bar 1:2

0 0.1 0.5m
Scale Bar 1:10

0 0.5m 1m
Scale Bar 1:20

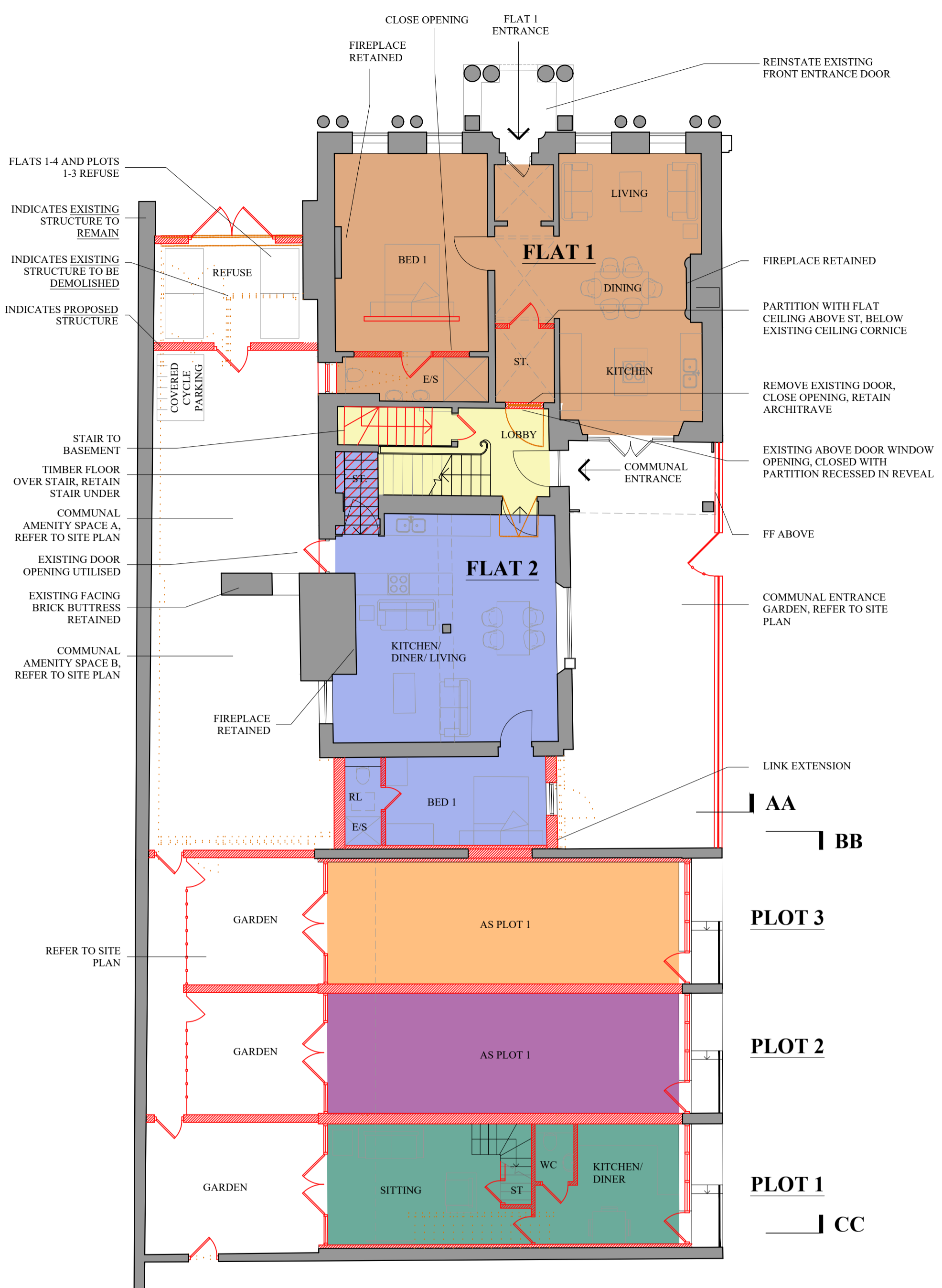
0 1 2 3m
Scale Bar 1:50

0 1 5m
Scale Bar 1:100

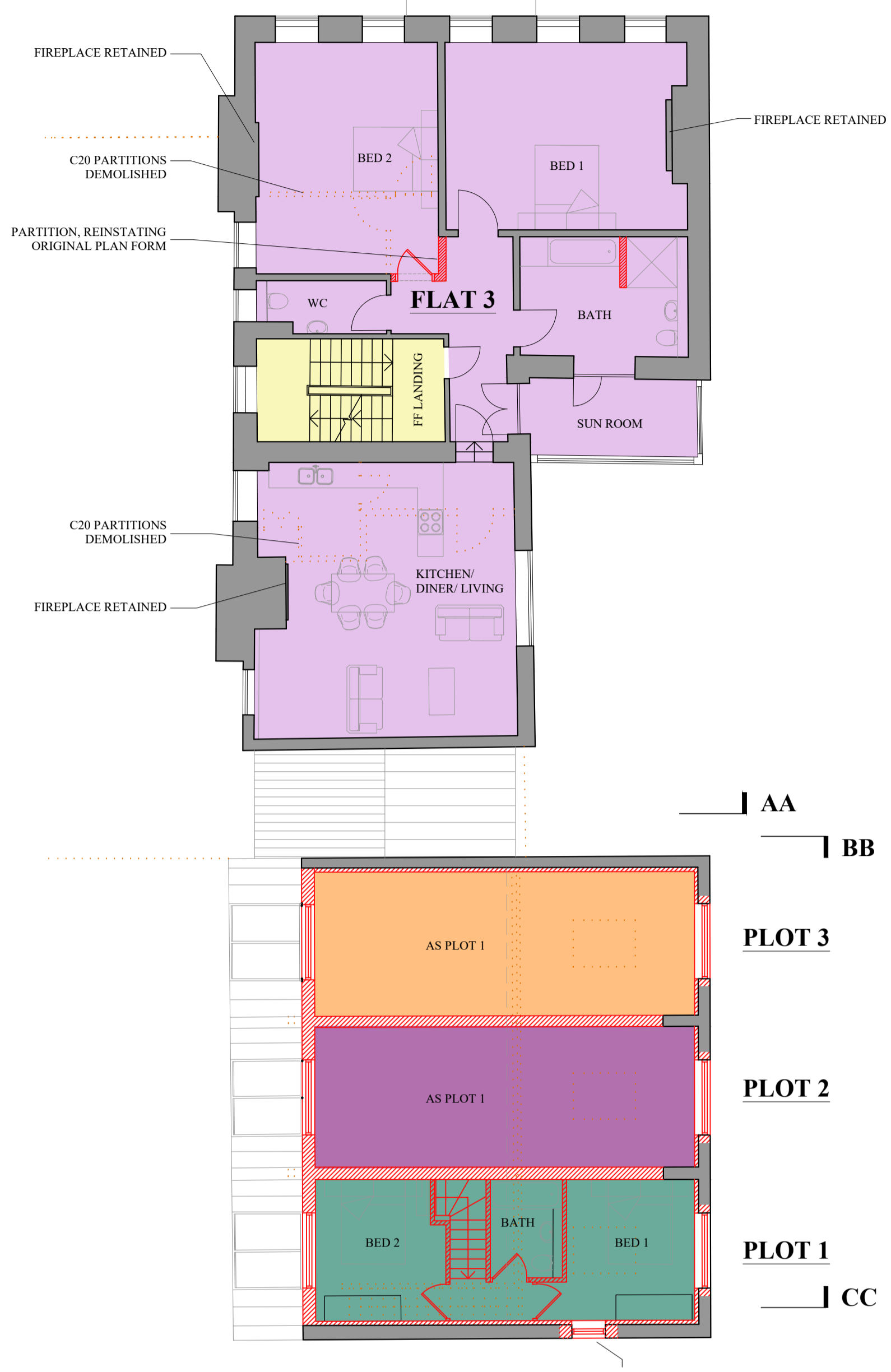
0 2 10m
Scale Bar 1:200

0 10 20 30m
Scale Bar 1:500

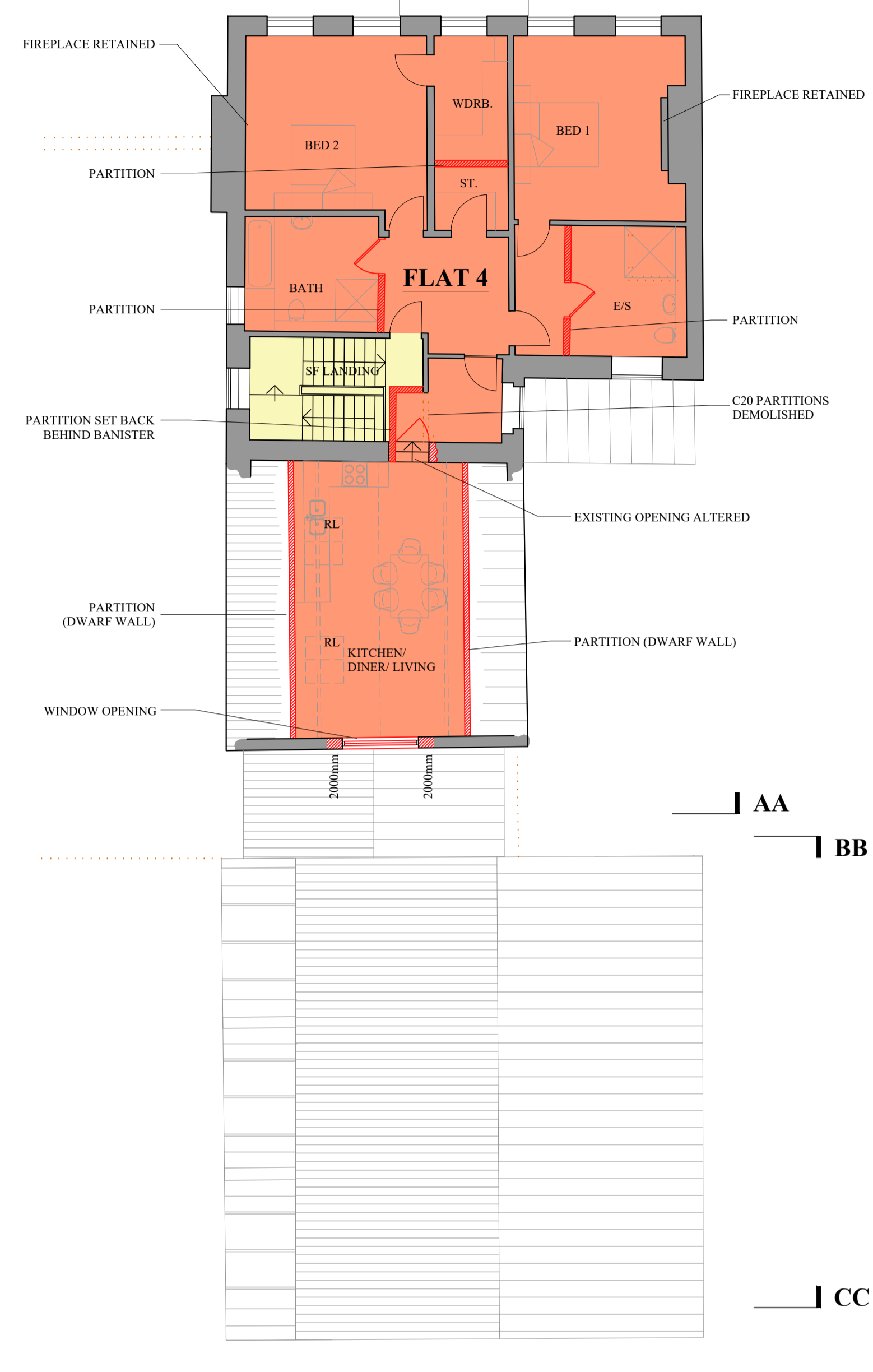
0 10 20 30 40 50m
Scale Bar 1:1250



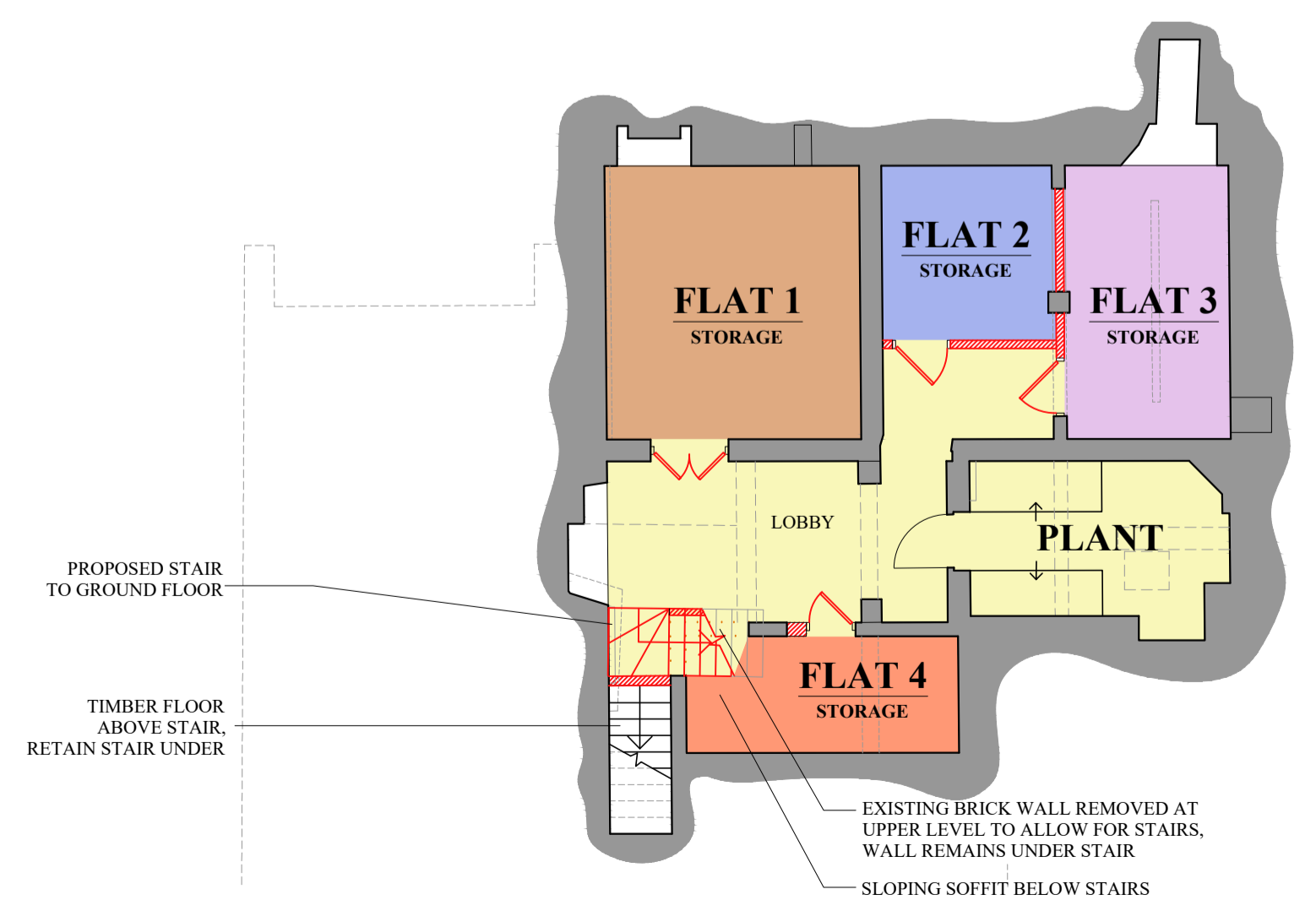
GROUND FLOOR PLAN - PROPOSED
1/100 @ A1



FIRST FLOOR PLAN - PROPOSED
1/100 @ A1



SECOND FLOOR PLAN - PROPOSED
1/100 @ A1



BASEMENT FLOOR PLAN - PROPOSED
1/100 @ A1

FLAT AREAS		PLOT AREAS	
FLAT AREAS (GIA)		PLOT AREAS (GIA)	
FLAT 1	71m ²	PLOT 1	62m ²
FLAT 2	TBC	PLOT 2	62m ²
FLAT 3	123m ²	PLOT 3	62m ²
FLAT 4	106m ²		
COMMUNAL AMENITY SPACE	TBC	PRIVATE AMENITY SPACE PER PLOT	
SITE AREA	486m ²	PLOT 1	18m ²
		PLOTS 2&3	13m ²

IAN ABRAMS ARCHITECT LIMITED

5 The Maltings, Station Road, Newport, Essex CB11 3RN
Telephone: 01799 543 533
Fax: 01799 543 653
e-mail: ian@abrams.uk.com
www.ian-abrams-architects.co.uk

Job title
RESIDENTIAL CONVERSION
to
WARE LIBRARY
87 HIGH STREET
WARE
SG12 9AD

Drawing title
FLOOR PLANS
PROPOSED

Scale	Date	Drawn
AS SHOWN @A1	10.10.23	THS
Drawing No		Rev
123822.02		-

The above line measures 200mm in length when printed correctly

J:\2023\WARE LIBRARY\Drawings\123822\Flooring_123822.dwg